

THE RESPONSIVE  
WAY OF WORKING



NH Collection Heidelberg



NH COLLECTION  
HEIDELBERG



## History

The history of this hotel goes back to 1753 when the brewery from the Kleinlein family was founded on the main street of Heidelberg. In 1870, the family acquired the current hotel location in Bergheimer Strasse to help grow the business. In 1884, the construction of a fermentation cellar started and expanded to over 11,000 square metres in 1927, adding one extra building. The brewery was a success until the 90's, after which new technologies and a new nearby competitor brought the business to an end. This meant that it was time to say goodbye to the historic Heidelberg Brewery.

In a new chapter for the facilities, a small group of architects combined the historic building with a new building, creating a sophisticated hotel with a breathtaking glass covered lobby atrium in between. The dialogue between modernity and tradition has formed the basis of the 2023 renovation, further creating a unique hotel in the heart of Heidelberg.

The historic part of the hotel still retains much of its brewery history and charm. The old cast-iron staircase in the lobby used to lead to a secret spiral staircase taking directly to the distillery.



## Location

Heidelberg is truly a hidden gem located at the Neckar river valley. Home of the oldest German university from the 14th century and renowned for its baroque old town, the city has a privileged location surrounded by forest, with a beautiful riverside setting and evocative hilltop castle, which draws 11.9 million visitors a year. Heidelberg has also been a hub for the arts, especially literature, throughout the centuries, and it was designated “A City of Literature” by the UNESCO.

In the main street of the peaceful Bergheim district, NH Collection Heidelberg is just a few minutes by walk from the historical center with its castle and ancient history. Small shops, trendy cafés and cosy restaurants can be found on the way to the city center. You can find a tram station in 200 meters distance from the property. So culture enthusiasts can reach the historic city center even faster, meanwhile nature-lovers may explore the beautiful Neckar river in walking distance from their temporary home.

### ADDRESS

Bergheimer Str. 91  
69115 Heidelberg  
Germany

[Map view](#)

### DISTANCE

**Heidelberg Main Train Station**  
0.8 km

[Map view](#)

**Old Town**  
0.8 km

[Map view](#)

**Church of the Holy Spirit**  
2.1 km

[Map view](#)

**Heidelberg Castle**  
2.9 km

[Map view](#)

### CONTACT FOR GROUP BOOKINGS

[nhgroupsales.de@nh-hotels.com](mailto:nhgroupsales.de@nh-hotels.com)  
T +49 30 223 801 35

[nh-collection.com](https://www.nh-collection.com)

# Rooms with a soul

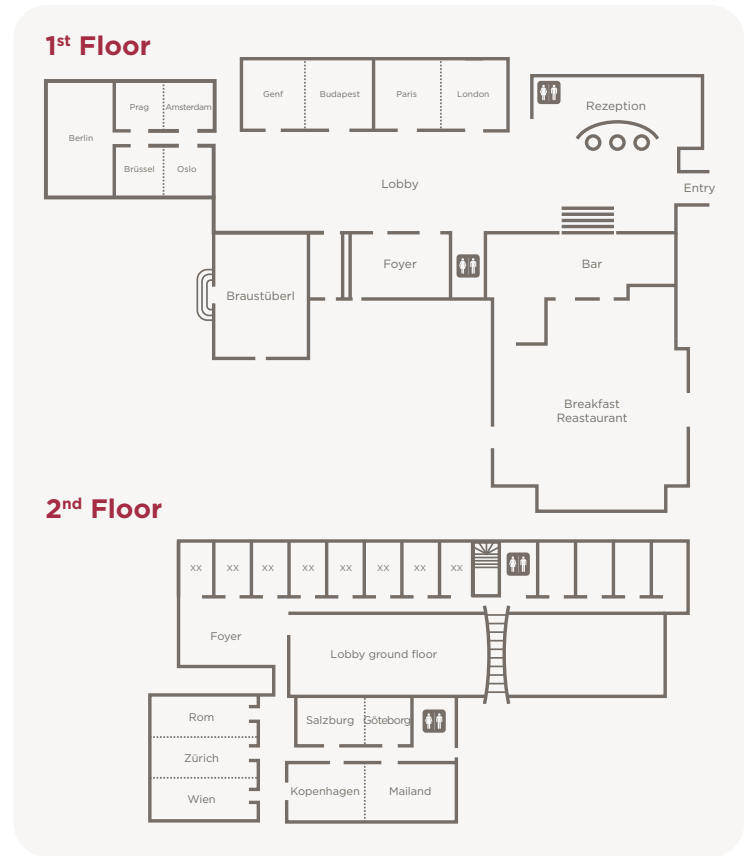
168 rooms and suites are modern and comfortable. Contemporary in style they have a luxurious feel with a gold and grey decor and wooden and metal accents. Imaginative artworks finish the room design. All rooms are well equipped with LED TV's, complimentary high-speed internet access and beds designed exclusively for NH Collection.

Room type	N° Rooms
Superior Rooms	90
Superior Rooms with Balcony	8
Superior Historic Wing	15
Premium Rooms	34
Junior Suites	9
Family Rooms	12





Meeting Room



## Inspiring meetings and events

An event at NH Collection Heidelberg is a truly memorable experience. The immense glass-covered lobby creates a grand entry for every event. The adjacent Braustübel can cater for any social or corporate dinner event for up to 60 people and offers a unique hint with a historical copper brew kettle taking center stage. Along with 16 meeting rooms, the hotel offers almost 1000sqm of Meeting and Event facilities, making it the one of biggest conference hotels in the city of Heidelberg.

With a team of experienced chefs we bring another dimension to your event with custom made menus and tempting breaks. Inspiring settings and exceptional service create an atmosphere for attendees to develop the highest level of creativity and enjoyment.

MEETING ROOM NAME	HEIGHT m	AREA m <sup>2</sup>	Cocktail	Boardroom	Banquet	Classroom	Theatre	U-Shape	Cabaret	DAYLIGHT
London/Paris	3,4	67	45	20	30	34	60	20	20	✓
London + Paris	3,4	134	90	40	70	70	120	40	36	✓
Budapest/Genf	3,4	67	45	20	30	34	60	20	20	✓
Budapest + Genf	3,4	134	90	40	70	70	120	40	36	✓
Amsterdam/Prag	3,4	34	23	10	-	12	22	10	-	✓
Amsterdam + Prag	3,4	68	45	22	40	24	44	22	20	✓
Berlin	3,4	118	79	36	60	70	100	36	30	✓
Oslo/Brüssel	3,4	33	22	10	-	12	22	10	-	✓
Oslo + Brüssel	3,4	66	45	22	40	24	44	22	20	✓
Wien	2,8	52	35	16	18	22	40	16	9	✓
Zürich	2,8	61	41	20	24	26	40	20	12	✓
Rom	2,8	49	33	16	18	22	40	16	9	✓
Wien + Zürich	2,8	110	75	30	48	60	80	30	24	✓
Wien + Zürich + Rom	2,8	162	108	40	70	70	130	40	36	✓
Salzburg	2,8	34	23	10	-	12	22	10	-	✓
Göteborg	2,8	36	24	10	-	12	22	10	-	✓
Salzburg + Göteborg	2,8	70	47	22	24	30	50	22	15	✓
Kopenhagen	2,8	31	21	10	-	12	22	10	-	✓
Mailand	2,8	67	45	22	30	30	50	22	20	✓
Kopenhagen + Mailand	2,8	98	71	30	48	60	80	30	24	✓



## An unforgettable experience

Enjoy extraordinary moments in exclusive spaces to connect or disconnect. Indulge in gastronomic experiences at the signature breakfast buffet and on-site bar, participate in activities in and around the hotel or relax and unwind in the hotel's wellness center which is exclusively for guest use. Guests can arrive easily by train or car, as the hotel has its own car parking facilities.

**nh** | HOTEL GROUP  
PART OF **MINOR**  
HOTELS

[nh-collection.com](https://nh-collection.com)